

We keep the
world on track ▶▶▶

Nurminen Logistics ▶▶▶

Looking forward since 1886

We have been serving our customers for over 130 years.
Our constant desire to find new solutions has made us one
of the most versatile partner in the logistics industry.

Established

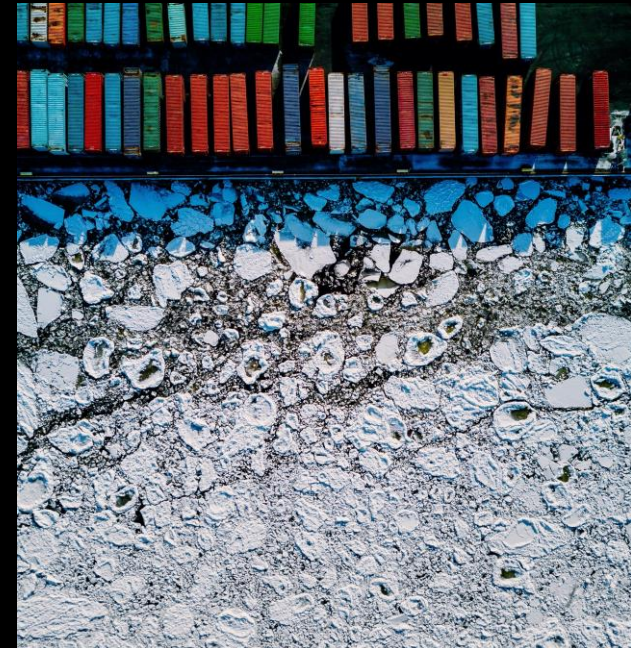
1886

Listed since

2008

Turnover (2021)

141,3 M€



We are global, we are from Finland

OFFICES IN FINLAND

OFFICES WORLDWIDE

Finland

Helsinki, Kotka, Rauma,
Vaalimaa, Vainikkala,
Niirala



China

Shanghai, Chongqing



Austria

Vienna



Latvia

Riga



Lithuania

Klaipeda



Rail and Multimodal services from Asia to Europe

- **LCL and FCL Rail service between Asia and Europe**
 - Trains operated by Nurminen (direct contracts with CN and KZ railways)
 - WB/EB service from Japan, Korea, Vietnam and China
 - Full door to door service
 - Own containers – guaranteed equipment availability
 - The fastest transit-time to Europe and Nordic Countries
- **International customer service office in Shanghai and Chongqing**
 - Customs declarations, licences and loading schemes
 - Booking coordination, pre- and on-carriage service
- **Terminal and warehouse services in China**
 - Terminal handling (loading, unloading, transloading)
 - Palletizing, re-packing, securing, lashing
 - Warehousing
 - Container depot for 40HC containers
- **Multimodal solutions in Europe and Nordics**
 - Railway connections in Europe, Finland, Sweden and Norway
 - Feeder service from/to EU mainports
 - Container haulage and trucking service for door deliveries
 - Import-, Export- and Transit-documentation and forwarding





Routing

Chongqing, China
Khorgos, China / Altyntkol, Kazakstan
Aktau, Kazakhstan
Baku, Azerbaijan
Poti, Georgia
Constanta, Romania

Estimated transit time from 28 days

Destinations with **rail** connection from Constanta include (but not limited to):

- Vienna (Austria)
- Duisburg (Germany)
- Ludwigshafen (Germany)
- Rotterdam (Netherlands)
- Antwerp (Belgium)
- Busto (Italy)

Destinations with **multimodal and truck** connection: any

Nurminen Logistics ►►►

Narvik – Tornio – Helsinki - Cargo HUB

- Bi-weekly rail service from/to Narvik via Haparanda
- Daily trucking service from Narvik, Tornio and Helsinki
- Ocean connection from/to Narvik port
- LCL / FCL door-door service
- 40'HC
- Export / Import Narvik via Helsinki
 - Europe and other Nordic countries
 - Baltics
 - Far-East
 - China, Korea, Japan, Vietnam



Sustainable logistics

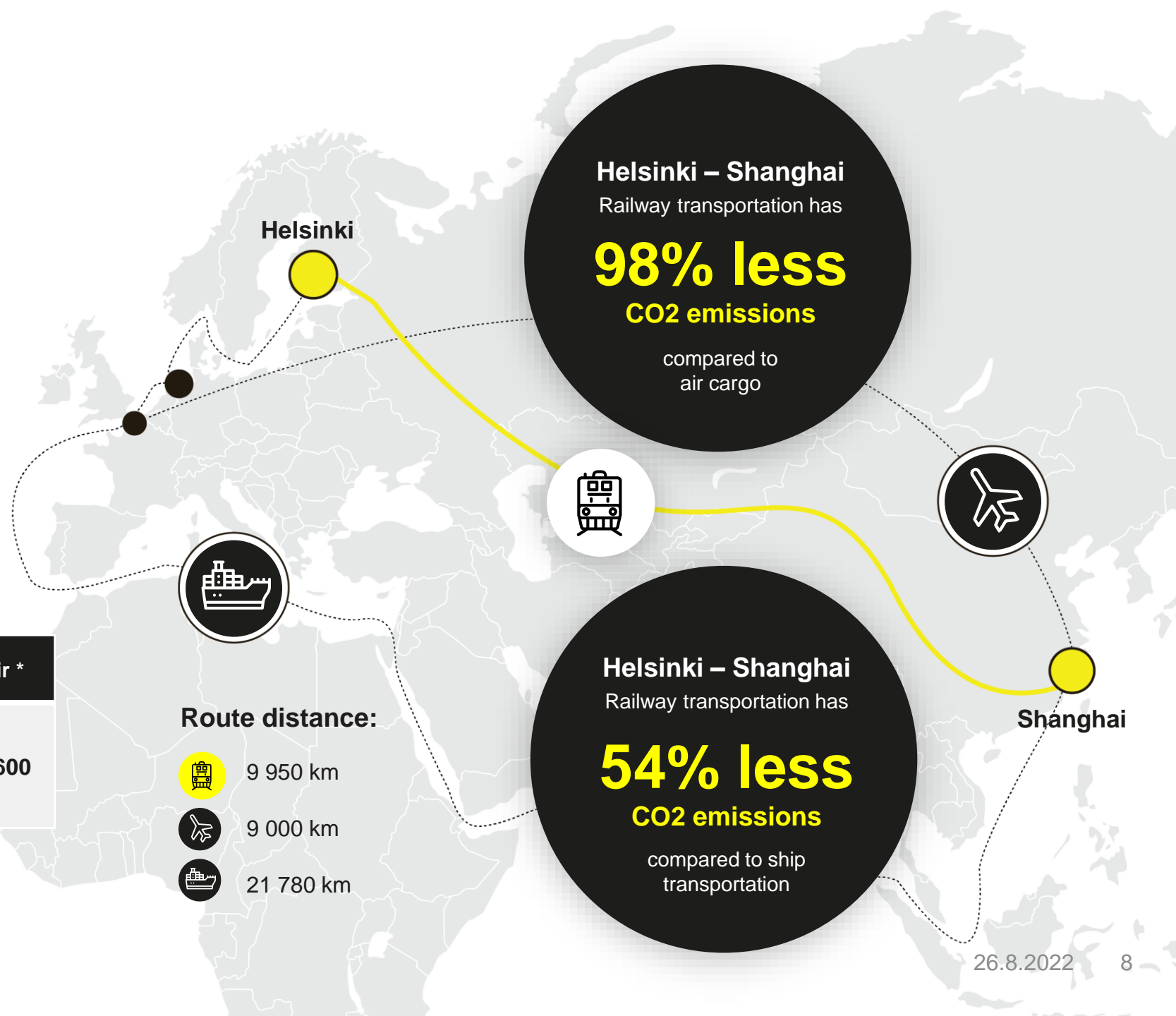
The carbon footprint of railway transportation compared to carbon footprints of ship transportation and air cargo for the same routes (Tank-to-Wheels).

The calculation is done according to the SFS-EN 16258 standard.

* Air cargo calculated without radiative forcing.

kgCO ₂ e/t	Railway	Ship	Air *
Helsinki – Shanghai	130	280	5 600

Nurminen Logistics ►►►





Thank you!

Marjut Linnajärvi, VP Sales
Nurminen Logistics Services Oy

+348 40 571 5034

marjut.linnajarvi@nurminenlogistics.com



Nurminen Logistics ▶▶▶

We keep the world on track.